

Scope Creep: Friend or Foe?

Copyright EBG Consulting, 2013, all rights reserved.

This presentation is for the viewer's personal use.
No copies, in part or in whole, including but not limited to, hard copy, print, photocopy or any electronic media, may be made or used without express written permission of EBG Consulting, Inc.

Visit www.DiscoverToDeliver for Creative Commons versions of images.

© EBG Consulting, 2013
www.ebgconsulting.com | www.DiscoverToDeliver.com

|

Scope Creep: Friend of Foe?

© EBG Consulting, 2013

Mary Gorman
www.ebgconsulting.com
www.DiscoverToDeliver.com



ebg
CONSULTING

Mary Gorman

VP Quality and Delivery,
EBG Consulting

Facilitator, trainer, mentor, agile coach, author

Certified Scrum Master, CBAP®

IIBA® BABOK®: Team Lead

PMI Requirements Management Task Force

Author: articles, blog, book

Blog: www.ebgconsulting.com/blog

Book website: www.DiscoverToDeliver.com

Twitter: mbgorman



© EBG Consulting, 2013
www.ebgconsulting.com | www.DiscoverToDeliver.com

3

backlog

creepy?

boundaries

scope kit

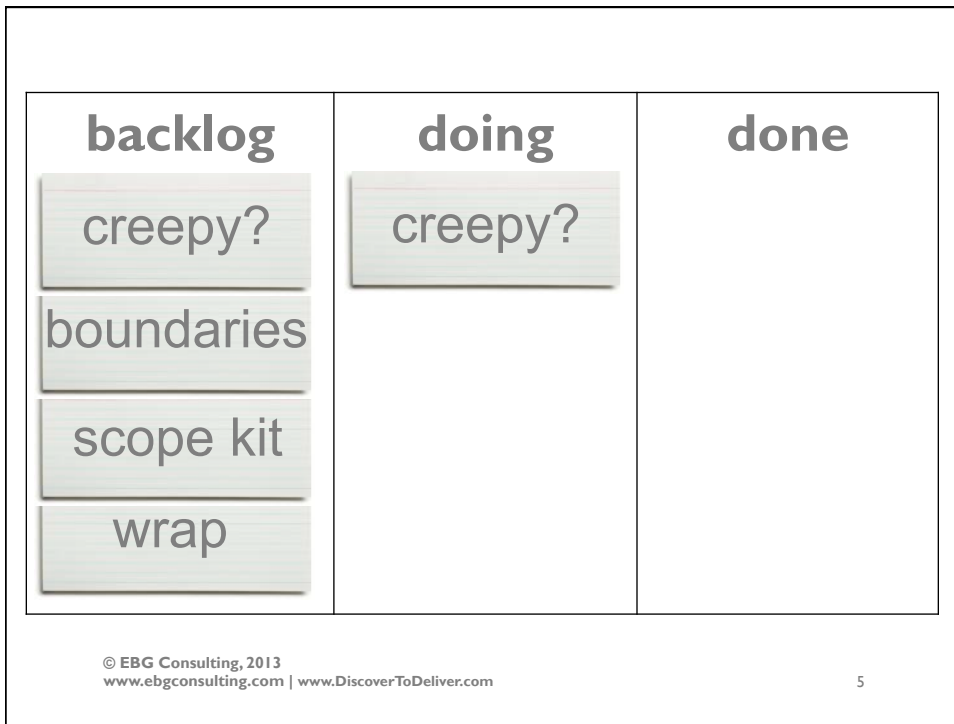
wrap

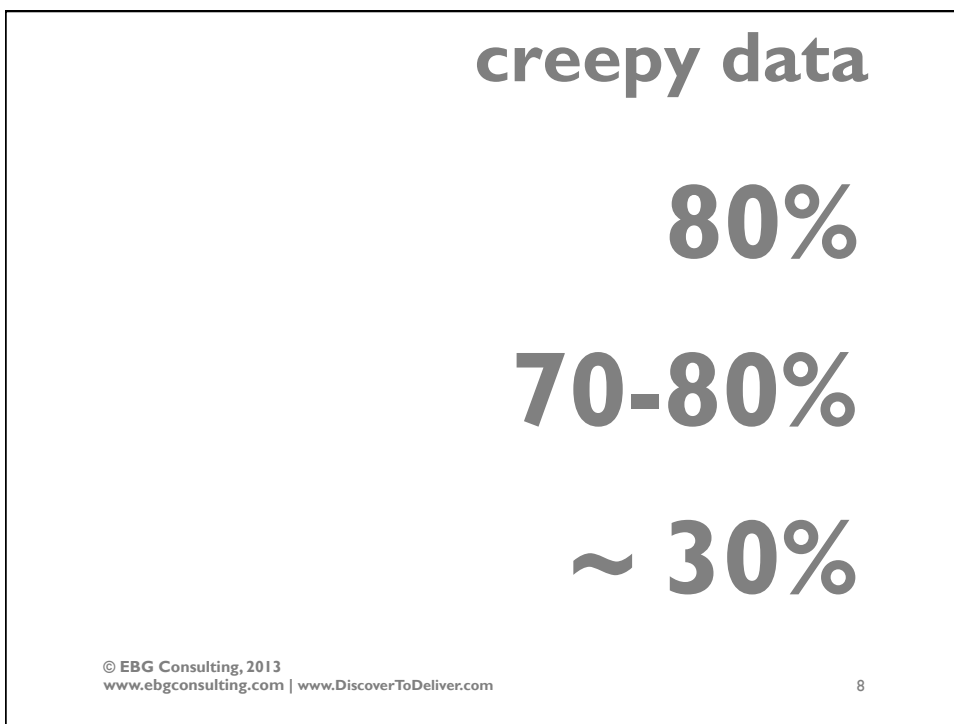
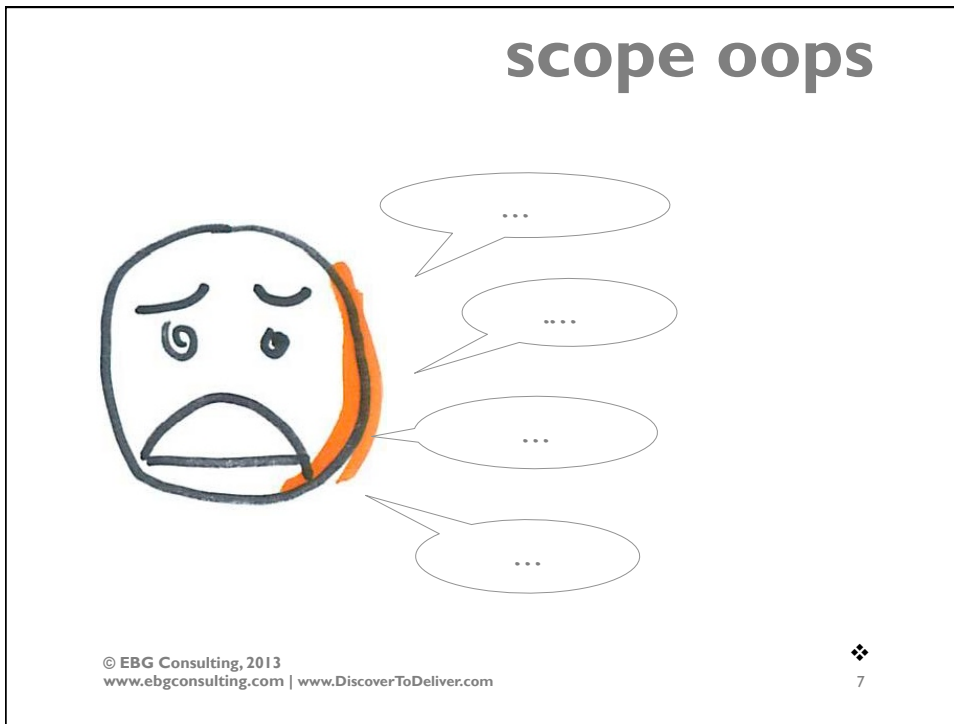
doing

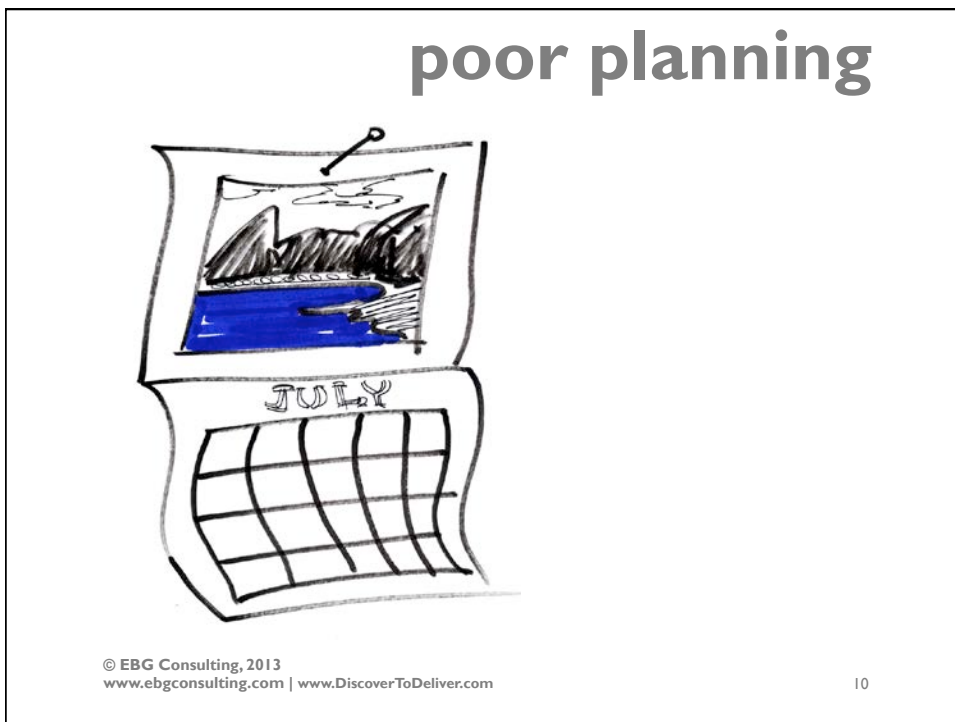
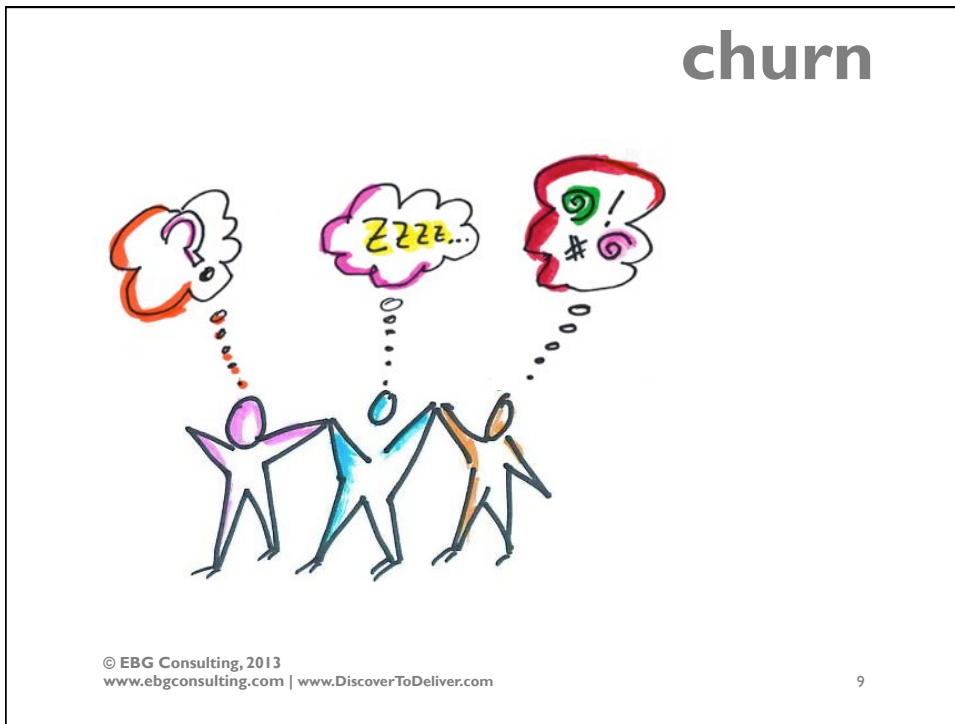
done

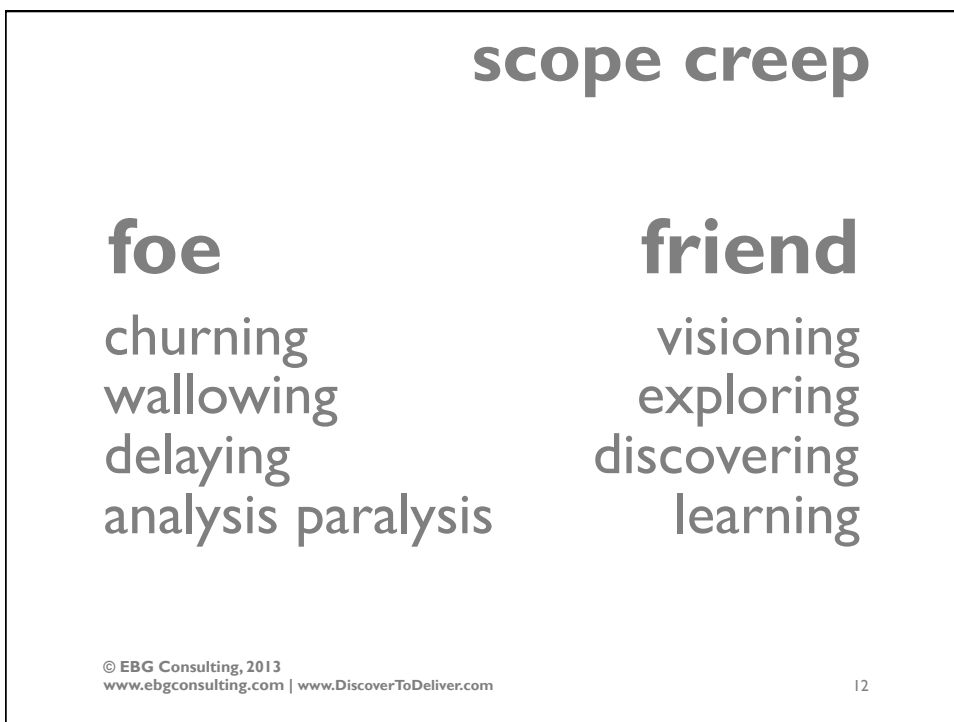
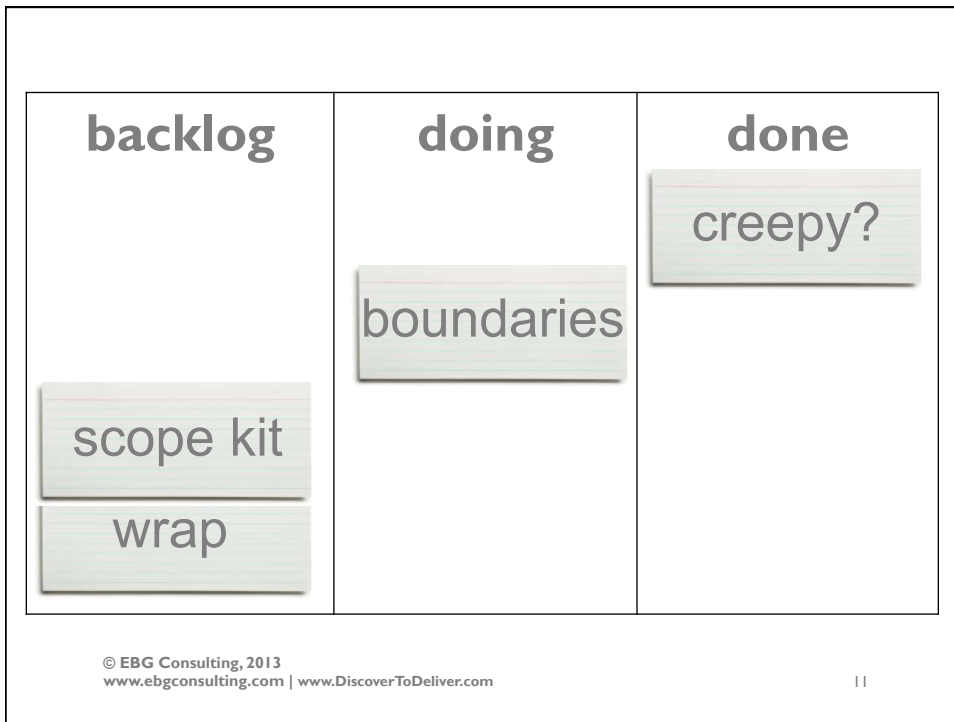
© EBG Consulting, 2013
www.ebgconsulting.com | www.DiscoverToDeliver.com

4









get a grip



© EBG Consulting, 2013
www.ebgconsulting.com | www.DiscoverToDeliver.com

13


product



© EBG Consulting, 2013
www.ebgconsulting.com | www.DiscoverToDeliver.com

❖
14

scope



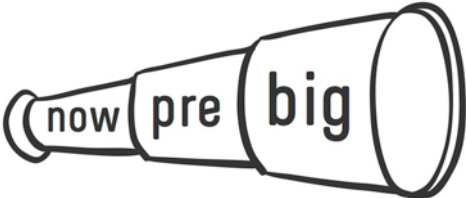
project context

product content

© EBG Consulting, 2013
www.ebgconsulting.com | www.DiscoverToDeliver.com

15

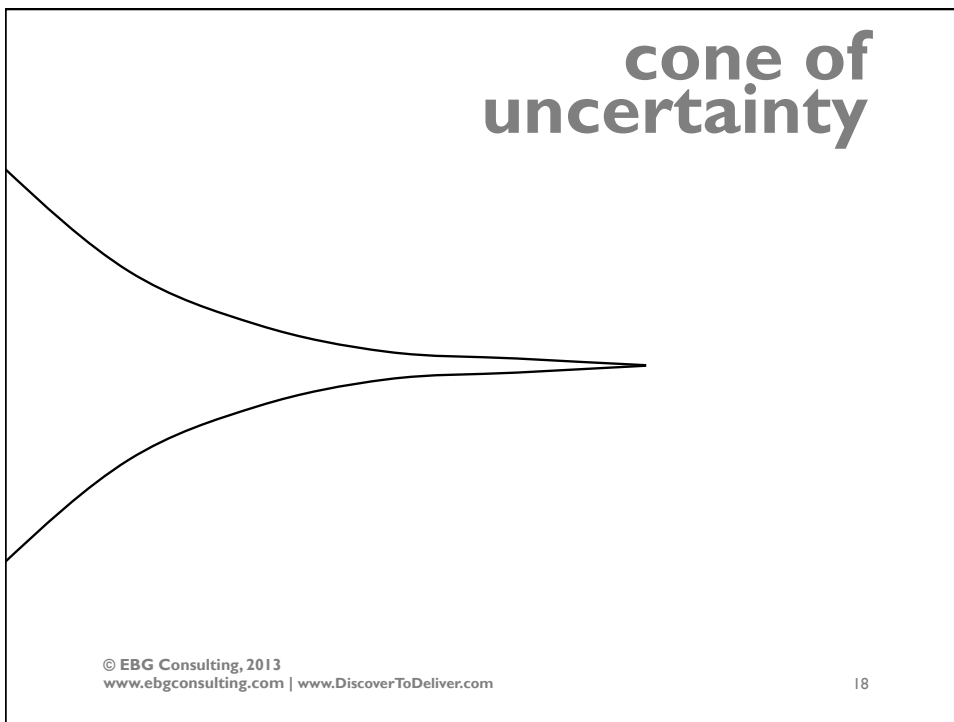
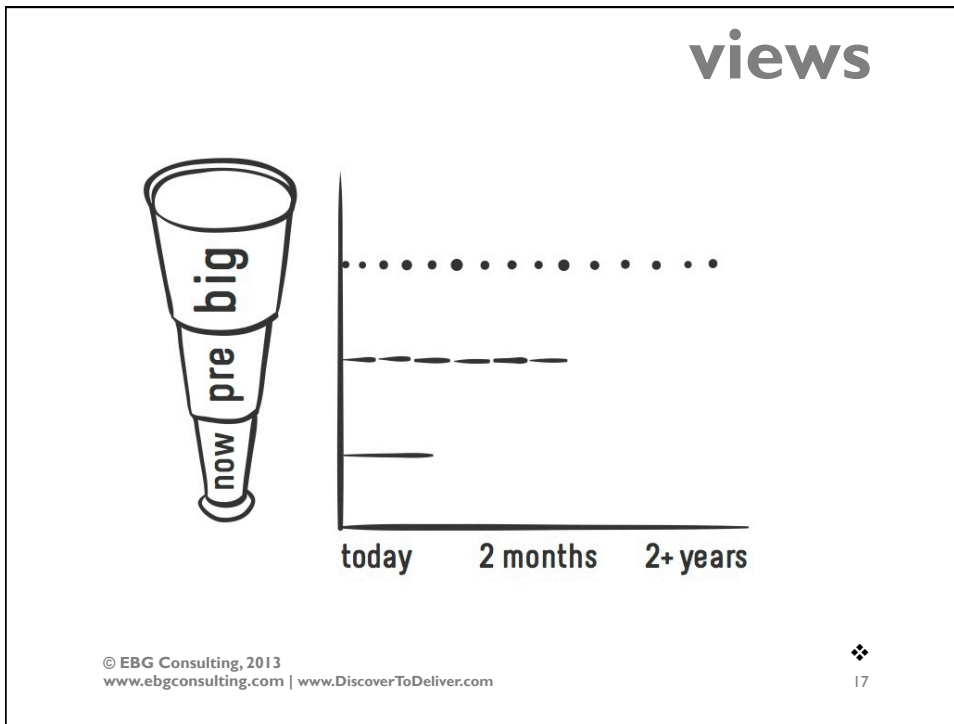
views



now pre big

© EBG Consulting, 2013
www.ebgconsulting.com | www.DiscoverToDeliver.com

16



embrace uncertainty

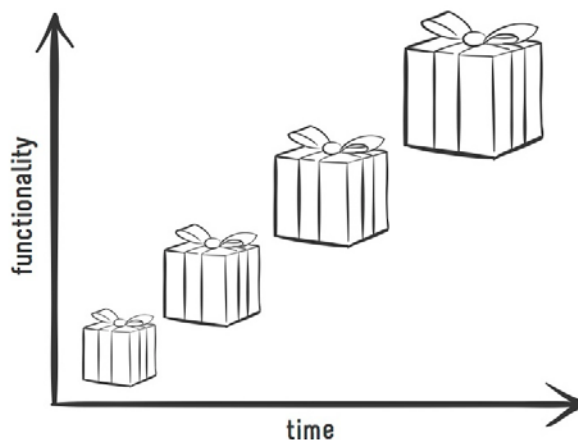
...when we are most ignorant
about most aspects of the project,
the best use we can possibly
make of the time available is
to attempt to
identify and reduce our ignorance...

Source: Dan North, "Introducing Deliberate Discovery"

© EBG Consulting, 2013
www.ebgconsulting.com | www.DiscoverToDeliver.com

19

purposeful incompleteness progressive elaboration



© EBG Consulting, 2013
www.ebgconsulting.com | www.DiscoverToDeliver.com

20

boundaries

limiting
OR
learning

© EBG Consulting, 2013
www.ebgconsulting.com | www.DiscoverToDeliver.com

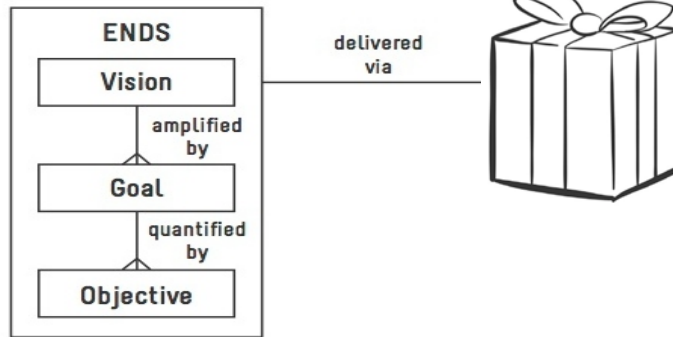
21

backlog	doing	done
		creepy?
	scope kit	boundaries
wrap		

© EBG Consulting, 2013
www.ebgconsulting.com | www.DiscoverToDeliver.com

22

ends and means



© EBG Consulting, 2013
www.ebgconsulting.com | www.DiscoverToDeliver.com

23

why?

?
?
?
?

© EBG Consulting, 2013
www.ebgconsulting.com | www.DiscoverToDeliver.com


24



value

© EBG Consulting, 2013
www.ebgconsulting.com | www.DiscoverToDeliver.com

25



hypothesis

a concept that is not yet
verified...

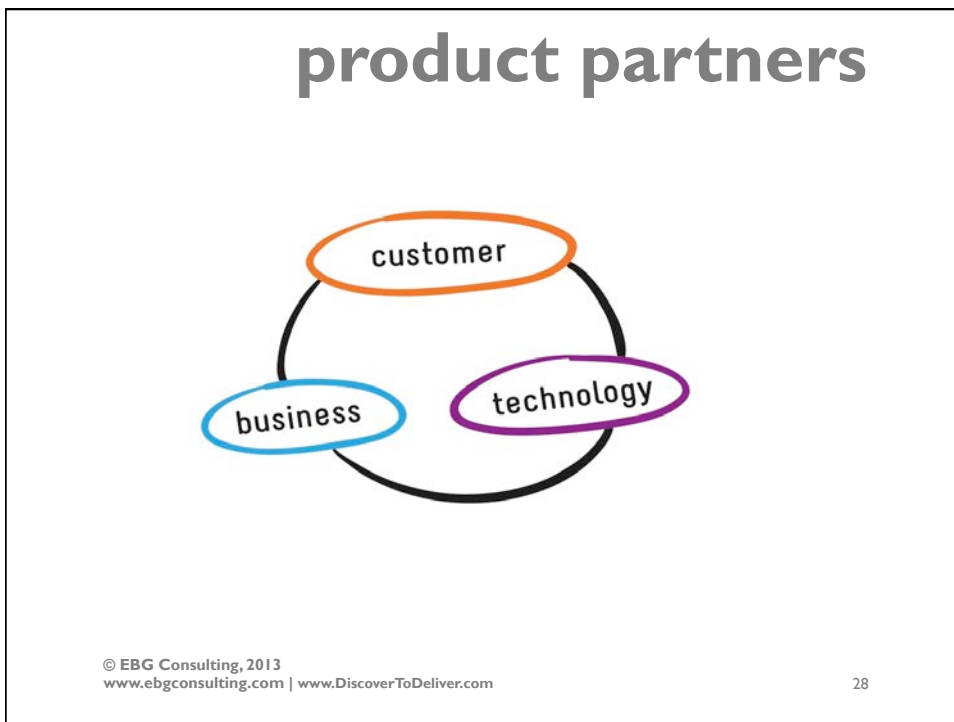
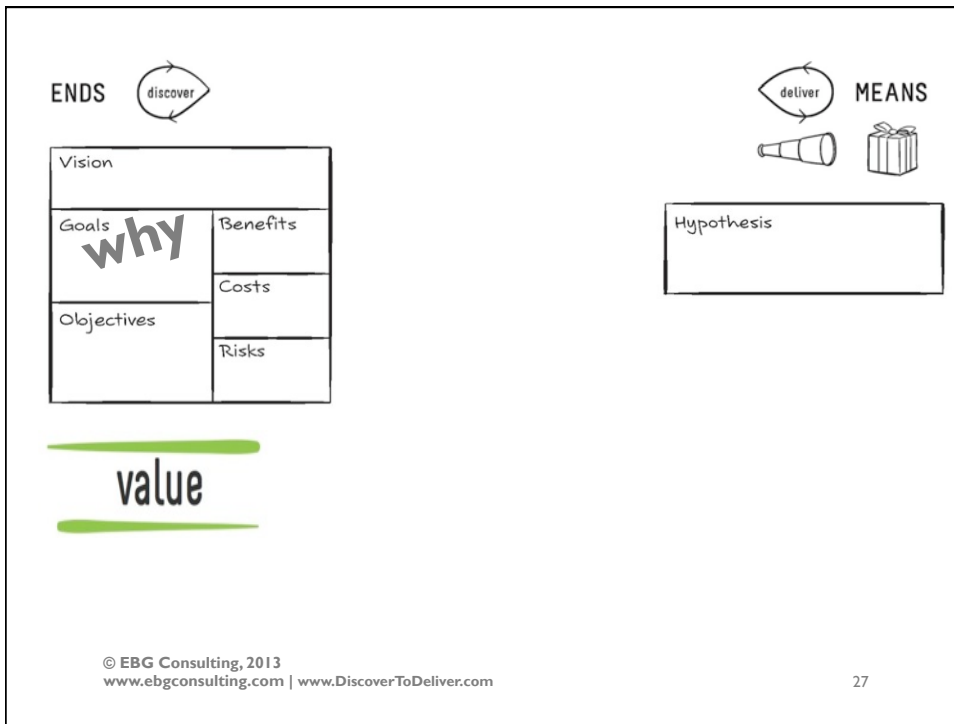
a tentative insight...

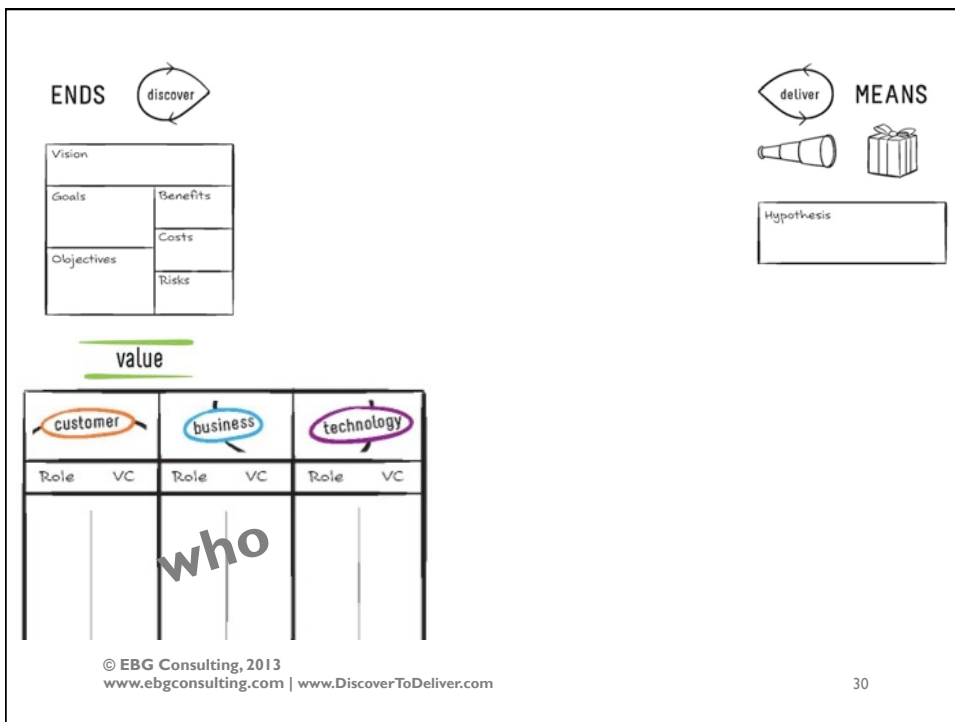
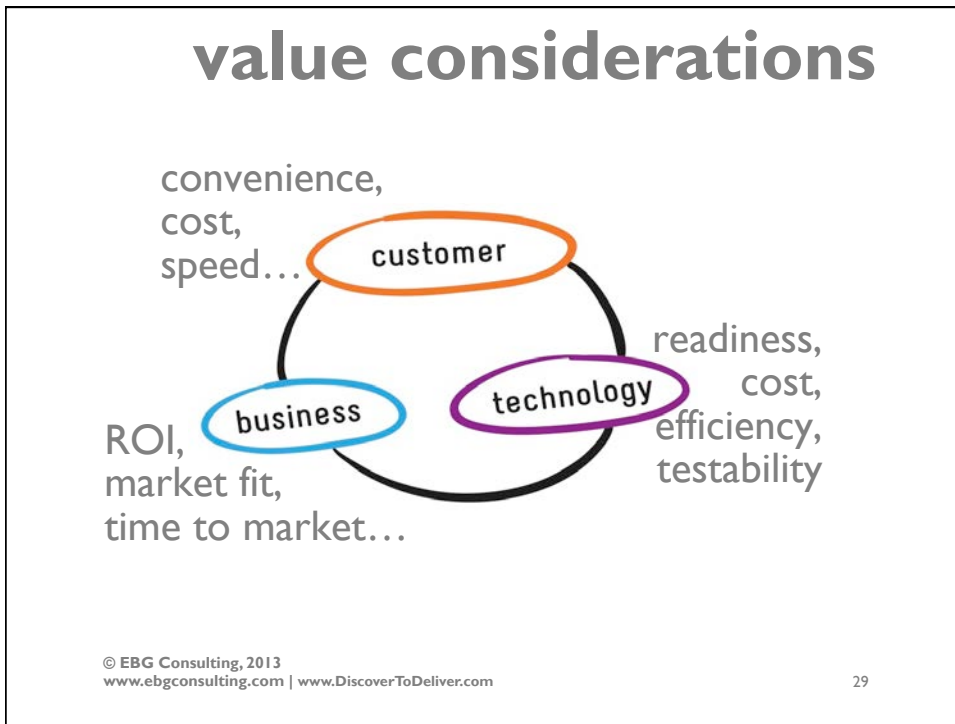
something proposed...

www.visualthesaurus.com

© EBG Consulting, 2013
www.ebgconsulting.com | www.DiscoverToDeliver.com

26





facilitated, collaborative discovery










elicit
 analyze
 learn
 value
 plan

© EBG Consulting, 2013
 www.ebgconsulting.com | www.DiscoverToDeliver.com

31

7 product dimensions

functional

						
User	Interface	Action	Data	Control	Environment	Quality Attribute

nonfunctional

© EBG Consulting, 2013
 www.ebgconsulting.com | www.DiscoverToDeliver.com

32

7 D's per view

Users	Interfaces	Actions	Data	Controls	Environments	Quality Attributes

© EBG Consulting, 2013
www.ebgconsulting.com | www.DiscoverToDeliver.com

33

product options

© EBG Consulting, 2013
www.ebgconsulting.com | www.DiscoverToDeliver.com

34

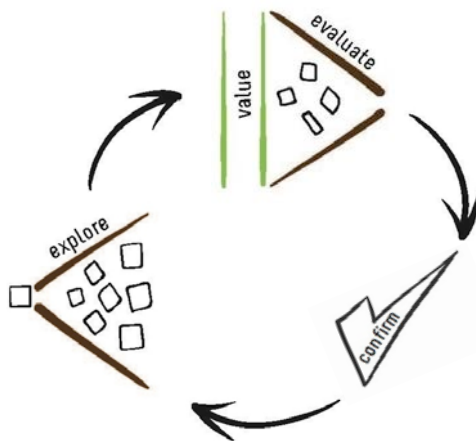
7 Ds product options board



© EBG Consulting, 2013
www.ebgconsulting.com | www.DiscoverToDeliver.com

35


structured conversation



© EBG Consulting, 2013
www.ebgconsulting.com | www.DiscoverToDeliver.com


36

visualize scope




User

persona
user role map



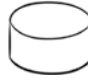
Interface

relationship map
context diagram
prototypes




Action

business process diagram
capability map
dependency graph
story map
value stream map



Data

data model
state diagram




Control

decision table
decision tree




© EBG Consulting, 2013
 www.ebgconsulting.com | www.DiscoverToDeliver.com

37

ENDS 








Vision	
Goals	Benefits
	Costs
Objectives	Risks

value

					
State	VC	State	VC	State	VC

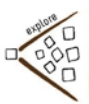
VC: Value Considerations

Product Options Board

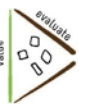
						
Users	Interface	Action	Data	Control	Environment	Quality Attribute


structured conversation



Visuals



value



MEANS 

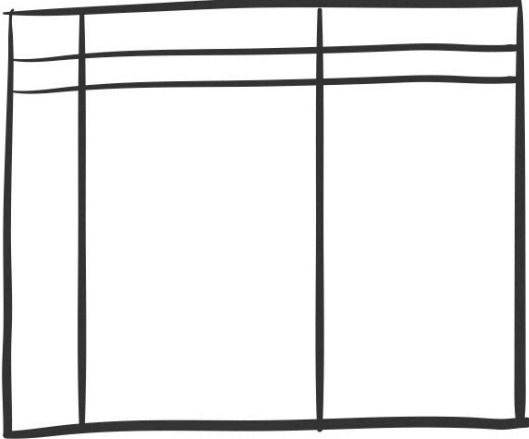



Hypothesis

© EBG Consulting, 2013
 www.ebgconsulting.com | www.DiscoverToDeliver.com


38

allocate to plan






© EBG Consulting, 2013
www.ebgconsulting.com | www.DiscoverToDeliver.com

39

ENDS 








Vision	
Goals	Benefits
	Costs
Objectives	Risks

value


		
State VC	State VC	State VC



VC: Value Considerations

Product Options Board

						
Users	Interface	Action	Data	Control	Environment	Quality Attribute

Visuals

MEANS 

Hypothesis

Theme


Persona

Candidate Solutions
(MVP, Feature, W/MF, Story)

allocate

© EBG Consulting, 2013
www.ebgconsulting.com | www.DiscoverToDeliver.com

validate scope



prototypes


reviews

acceptance criteria

learning from actual results




© EBG Consulting, 2013
 www.ebgconsulting.com | www.DiscoverToDeliver.com

41

ENDS 








Vision	
Goals	Benefits
Objectives	Costs
	Risks

value


					
State	VC	State	VC	State	VC



VC: Value Considerations


Product Options Board

						
Users	Interface	Action	Data	Control	Environment	Quality Attribute

Visuals

MEANS 

Hypothesis
Acceptance Criteria 
Theme
Persona
Candidate Solutions (MVP, Feature, MWF, Story)

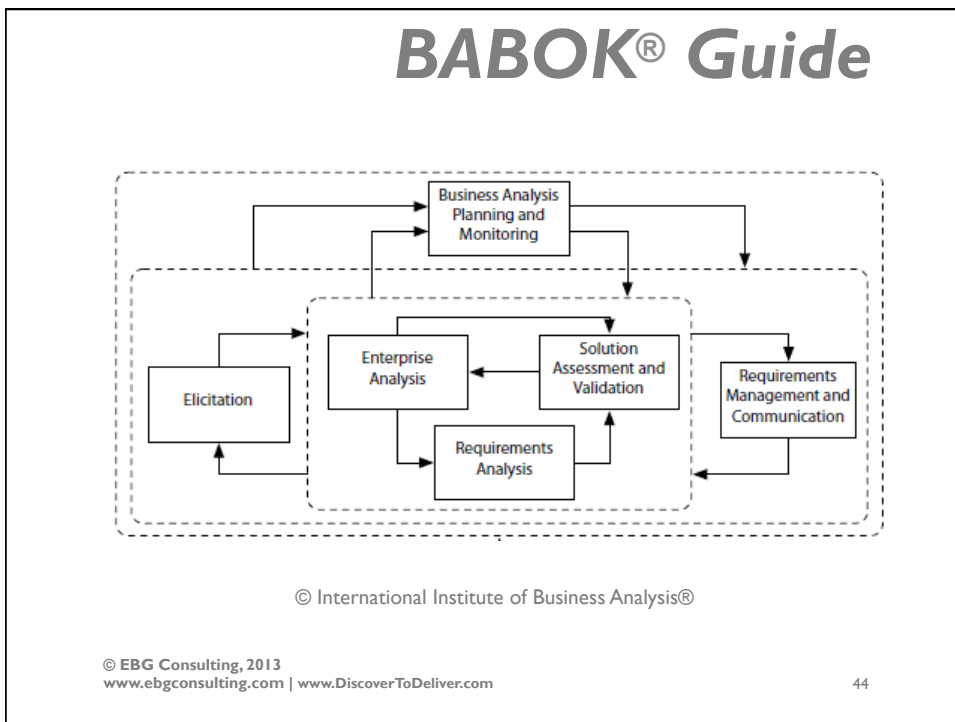
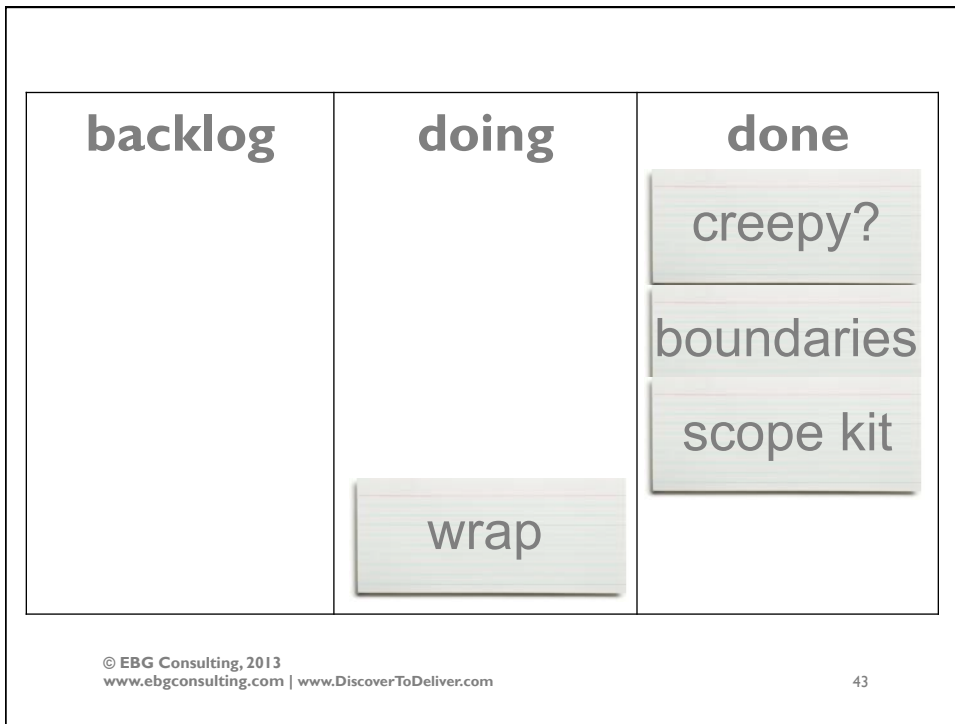
structured conversation

validate

allocate

© EBG Consulting, 2013
 www.ebgconsulting.com | www.DiscoverToDeliver.com

42



adapt scope for...

delivery method

traditional, timebox, flow

COTS

savvy shopper

regulated product

© EBG Consulting, 2013
www.ebgconsulting.com | www.DiscoverToDeliver.com

45

a + a

aptitude

rqts elicitation
analysis modeling
facilitation
communication
product domain

+


attitude

curiosity
courage
neutrality

© EBG Consulting, 2013
www.ebgconsulting.com | www.DiscoverToDeliver.com

46

scope change?




mgmt
or
prevention

© EBG Consulting, 2013
www.ebgconsulting.com | www.DiscoverToDeliver.com

47

retrospect



© EBG Consulting, 2013
www.ebgconsulting.com | www.DiscoverToDeliver.com

48

scope creep

foe

churning
 wallowing
 delaying
 analysis paralysis

friend


visioning
 exploring
 discovering
 learning

© EBG Consulting, 2013
 www.ebgconsulting.com | www.DiscoverToDeliver.com

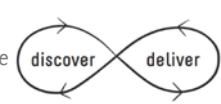
49

Discover to Deliver™


The product partners continually collaborate



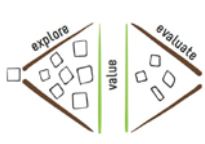
collaborate




the evolving product.




The partners




options for the




They identify and confirm



cohesive chunks of high-value options and allocate them to plans



at all views.



www.DiscoverToDeliver.com

Copyright © 2012 by EBG Consulting Inc.

email mary@ebgconsulting.com
twitter [mbgorman](https://twitter.com/mbgorman)
about EBG www.ebgconsulting.com

© EBG Consulting, 2013
www.ebgconsulting.com | www.DiscoverToDeliver.com



how EBG helps

training

Agile Business Analysis
The Essential Product Owner
Acceptance Testing
Mastering Business Analysis...
and more...

services


Planning Workshops
Agile Jump Start
Backlog Refining
Coaching Product Owner/Champion

© EBG Consulting, 2013
www.ebgconsulting.com | www.DiscoverToDeliver.com



DISCOVER TO DELIVER
Agile Product Planning and Analysis

Ellen Gottesdiener and Mary Gorman



www.DiscoverToDeliver.com

Coupon Code: IIBAPHLD2D
30% off book
thru 31 Oct

© EBG Consulting, 2013
www.ebgconsulting.com | www.DiscoverToDeliver.com

53

backlog	doing	done
		creepy?
		boundaries
		scope kit
		wrap

© EBG Consulting, 2013
www.ebgconsulting.com | www.DiscoverToDeliver.com

54